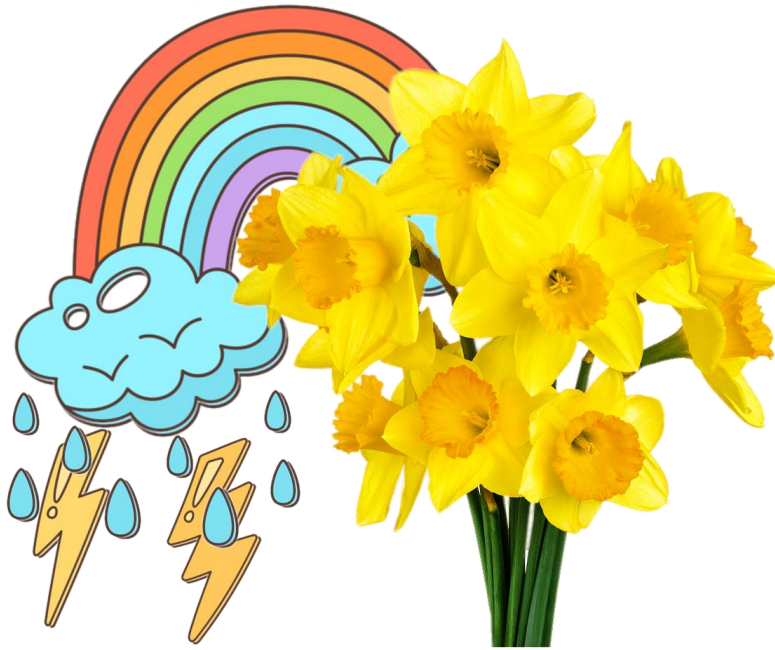


# *“A Forecast of Daffodils”*



22<sup>nd</sup> Annual Daffodil Show

Presented by

The Greater Saint Louis Daffodil Society

Open to the Public

Friday April 8, 2022 - 2 PM to 5 PM

Saturday April 9, 2022 - 9 AM to 4 PM

**Show setup Thursday afternoon and Friday morning**

First Free Church, 1375 Carman Road, Manchester, MO  
63021, Room 341

# DESIGN DIVISION CLASSES

## **Class 1: "Storms Ahead!"**

Spring brings thunderstorms, dark skies, blowing winds. A *creative* design (non-traditional) suggesting storms staged on a 36" tall wire stand topped with a flat 15" circle. Underlay may be used if furnished by the exhibitor. *Minimum* height of design should be 22"

4 ENTRIES

MINIMUM HEIGHT 22"

## **Class 2: "After the Storm"**

Pools of water have formed after a storm passes. A design suggesting or showing water staged on a black Parson's table 18" X 18" X 18" from the floor. Underlay may be used if provided by exhibitor. *Minimum* height should be 18."

4 ENTRIES

MINIMUM HEIGHT 18"

## **Class 3: "Droplets of Rain"**

Precipitation comes in tiny bits of water that shimmer and shine, reflecting objects around them. A small design staged on an elevated shelf atop a black covered table against a 9" x 9" background in a choice of several colors. Design may not exceed 8" in any direction.

UP TO 7 ENTRIES

NO MORE THAN 8" IN ANY DIRECTION

## **Class 4: "Things come alive on an Early Spring Day!"**

Birds sing loudly, plants push up from the ground, animals come out of their winter sleep. A design suggesting return of spring staged on a black covered table against a black background 20" tall x 14" wide. *Maximum* height for design is 19.5"

UP TO 5 ENTRIES

**YOUTH ONLY**

MAXIMUM HEIGHT 19 ½"

## **Class 5: "Rainbows in the Clouds"**

A design showing colors of the rainbow staged on a black covered table against a green background 20" tall x 14" wide. *Maximum* height for design is 19.5"

UP TO 5 ENTRIES

**YOUTH ONLY**

MAXIMUM HEIGHT 19 ½"

**NOTE:** Tables for class 3, 4, and 5 will be covered with a black sheet, top and sides.

# RULES FOR THE DESIGN DIVISION

1. The theme of the show is “*A Forecast of Daffodils*”.
2. One or more daffodils must be used in each design and the daffodil or daffodils must provide the dominant interest. Daffodils and other materials used need not have been grown by the exhibitor. There should be emphasis on fresh plant material in each design. Each design must be the work of one individual.
3. Only one entry is permitted to an exhibitor in each class. Entries are limited to four (4) each in all classes except Class 3 which can have up to seven (7) entries. Youth classes may have up to five (5) entries each and may be divided by age. If not registered in advance, entries will be accepted if space is available and in the order of arrival, but only after those registered have signed in. To register for a class please **contact Kim Peterson at (314) 421-6272 or email [kprp@swbell.net](mailto:kprp@swbell.net)**.
4. No use of artificial/plastic flowers or foliage is permitted. Accessories are permitted unless otherwise stated. Dried or other natural materials (rocks, shells, etc.) may be used in all classes. Dried materials may be treated, but fresh plant material may not be treated or dyed. Bases, mats, drapes or underlays are permitted but must be furnished by the exhibitor.
5. All plant material should be listed on a card.
6. For exhibitors traveling from a distance, a limited number of containers, line materials, decorative wood and equipment (oasis, pin holders, stickum, picks, etc.) will be available on a first come, first served basis. Please provide or arrange for your own daffodils. Usually those who enter the Horticulture Division bring along extras.
7. Show set-up begins on Thursday April 7 from noon until 10 pm and continues Friday, the next morning from 9 AM until noon. Judging will begin at noon on Friday until 2 pm. National Garden Club Judges will judge the Design Division and the judges' decision is final. Awards will be withheld if not merited. Entries must remain in place until the close of the show, Saturday April 9, 4 pm.
8. Every effort will be made to protect the property of those entering designs. However, the Greater St. Louis Daffodil Society will not be held responsible for any loss or breakage.
9. The Greater St. Louis Daffodil Society appreciates the assistance of the East Central District of the Federated Garden Clubs of Missouri in the Design Division of our flower show.

# DESIGN AWARDS

1. **CLASS AWARDS** - One first, one second, one third and one honorable mention will be given in each class, if merited.
2. **BEST DESIGN OF SHOW** - Rosette awarded.  
**NOTE:** A "*Best Design of Show*" award must be given if there is a first-place ribbon in the Design Division in classes that are qualified.
3. **DESIGN SWEEPSTAKES** - Awarded to the exhibitor with the most first place ribbons.  
**NOTE:** Design Sweepstakes is awarded to an exhibitor who has won at least two first place ribbons. In the event that two or more exhibitors are tied, ties will be resolved on the basis of second place ribbons won, and if necessary, upon the basis of third place ribbons won.
4. **BEST YOUTH DESIGN** - Rosette awarded.
5. **YOUTH DESIGN SWEEPSTAKES** - Awarded to youth with most first place ribbons.